

PENN Radiation Oncology

NEWSLETTER

WINTER 2014

WELCOME



Welcome to the Winter edition of the Penn Radiation Oncology Newsletter! We hope everyone had a wonderful holiday season as we move forward with the second half of the academic year. We are getting more and more participation in the newsletter with each edition, so thank you to all that have contributed! We are giving you more opportunity to participate by showing the Radonc Logo in locations of your choice and submitting your photos for publication. So use your coworkers, travels, and imagination to get involved in the next newsletter.

INSIDE THIS ISSUE

- More than Cancer Care 1
- Welcome to Our New Employees 2
- Announcements..... 2
- Awards 2
- Oh, the Places You'll Go 3
- OncoLink® 4
- Research Update 5
- Quality Update 5
- Around the Network 6
- Social Scoop 7
- Recognition Round-up 8
- Education Connection 8
- Movie Review 9
- Delicious Dish..... 9
- Departmental Publications 10

Congratulations to faculty for all the recent publications in the department. We have an impressive list this month. Keep up the good work! OncoLink at 20 years is an extraordinary feat as the oldest and one of the largest Internet cancer resources in the world, which is based out of our offices in RadOnc. We could not have done it without all the volunteers in radiation oncology and across the institution over the years. Thanks to all the OncoLink staff that have tirelessly worked to find new ways to deliver the highest quality information on the Internet for all these years!

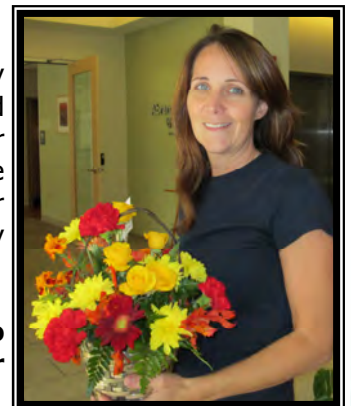
MORE THAN CANCER CARE

Nursing staff at Valley Forge come to aid of man in full cardiac arrest

This past summer, a woman whose husband was in full cardiac arrest pulled into the parking lot at Valley Forge after seeing the *Penn Medicine* sign. The woman quickly thought that this was her best chance to get help for her husband. The medical oncology nursing staff and radiation nurse (**Mary Thomas**, shown right) performed CPR on the man and called 9-1-1.

After the events of that day in June, the staff at Valley Forge had not heard any more about the gentleman and weren't even sure that he survived. Then, on October 18th, the man and his wife returned with flowers for the staff to thank them for what they had done for him four months prior. Without their fast action, this story may have had a very different ending.

Thank you to our nurses, and all of our staff, who not only make a difference in the lives of our cancer patients, but also within the community!



WELCOME TO OUR NEW EMPLOYEES

We are pleased to welcome the following new employees to the Department of Radiation Oncology:

Meena Swaminathan, CPA, CRA
Chief Financial & Administrative Officer, Research Division

Andre Konski, M.D.
Clinical Director, Chester County Hospital

Angel Howzell
Administrative Coordinator

Nicole Ellis
Social Worker

Mary McFadien
Social Worker

Michael Brown
PRN Radiation Therapist

Ann Beck
PRN Dosimetrist

Michael Donato, MBA
Director of Finance

Karen Furtek
Therapist Scheduler

Patricia Oglesby
PSR

Kristin Noble
PRN Dosimetrist

CONGRATULATIONS!!!

Welcomed Baby

Katie Chong
Ryan Hofmann
Rebecca Wilson

Anthony Deltufo
Laura Kendrick

Wedding Bells

Jamie Gardiner
Lisa Smedley
Giovanna DiCicco

Amy Webster
Fallon Savage

Board Certification

Pete Gabriel, M.D.
Clinical Informatics

Promotions & Appointments

Peng Wang, Ph.D.
Assistant Chief Resident of Medical Physics

John Plastaras, M.D.
Chief of the GI/Lymphoma Service

Curt Deville, M.D.
Chief of the GU and Sarcoma Services

Sam Swisher-McClure, M.D.
Program Director, Medical Residency Program

Annemarie Fernandes, M.D.
Chief Resident

Jacob Shabason, M.D.
Assistant Chief Resident

Amy Avellino, MS, RN
Director of Clinical Operations

Kurt Morath
Director of Operations

AWARDS

Cordy Baffic

2014 ACGME-GME Program Coordinator Excellence Award



Amy Avellino

Kendall Fund for Excellence and Leadership in Nursing

Justin Bekelman, M.D.

Kligerman Fund for Excellence and Leadership in Healthcare Economics and Outcomes Research

Nela Maskuti

Photograph accepted in the Celebration of Life and Art Exhibit



OH, THE PLACES YOU'LL GO . . . WITH THE PENN RADONC LOGO!

How creative can you get?

The mountain tops, the movies, a fishing boat I bet!

How exciting it will be,

and interesting for all to see

you with the Penn RadOnc logo

in all the unique places you will go go!



The Challenge:

Use shirts, jackets, bags, signs, stickers, etc., to sport the Penn RadOnc logo in the most unique, creative and/or unusual places!

The How-to:

(1) Find our logo on the share drive: <I:\Shared\RadOnc Presentation Template\PennRadOnc Logo.JPG>

(2) Take a picture of you with your logo in a unique location

(3) Submit your photo to **Kat Voetelink** at kat.voetelink@uphs.upenn.edu

The Reward:

The most creative photos will be featured in the next edition of the newsletter! Each new edition of the newsletter will be an opportunity to showcase your unique photo.

So get to snapping before it's too late!

Your photos are sure to be great.

Everyone will get a good chuckle

when they see the logo on a belt buckle

in the middle of the desert dry

or from an airplane in the sky!

Oh, what a clever idea that would be.

Now onto your journeys and let your imaginations run free!!



PENN RADIATION ONCOLOGY



Penn Medicine



Congratulations OncoLink®!!! OncoLink Celebrates it's 20th Anniversary

In March of 1994, **Dr. Joel Goldwein** launched OncoLink, the first cancer information site on the Internet, from his office at the University of Pennsylvania. Dr. Goldwein thought OncoLink would be a good way for physicians to share information. Little

did he know that this would become one of the most trusted sources of cancer information for patients, families and healthcare professionals. As we celebrate its **20th anniversary** (how many websites can say that?), let's look back and see just how far it's come!

In January of 1994, there were only 30,000 domains on the Internet – compare that with almost one billion today. OncoLink started as a source of links to cancer information on the web, before Google, or any browser for that matter! Not long after its inception, the team of doctors and nurses involved started writing their own content and today OncoLink houses over 150,000 articles. This soon expanded to include conference coverage – physicians reporting from professional meetings so colleagues around the globe could get the latest research reported the day it was presented.

Over the next few years, the OncoLink team expanded to include content written by many disciplines, including nursing, dieticians, physical and occupational therapists, social workers and more. This multidisciplinary approach allows OncoLink to cover the many areas a patient may be interested in learning about, such as treatment information, side effect management, nutrition and complementary therapies.

You may not know that OncoLink is run by a full-time staff of just 3 people! The site relies on the generosity and commitment of hundreds of volunteer clinicians and survivors who believe in its mission and give their time and expertise to develop and review content. It is this group that sets OncoLink apart from other sites.

The OncoLink team likes to dream big- think about things outside the usual healthcare box – and put those ideas into motion. This attitude has allowed OncoLink to be crowned with a few online “firsts”:

- ◆ First website to provide same-day reporting from professional meetings for physicians
- ◆ First to use an online, IRB approved, electronic consent form for a study
- ◆ First major US-based, online cancer resource translated into Spanish
- ◆ First website to have a clinical trials matching program, in collaboration with Emerging Med
- ◆ First to develop a personalized Cancer Survivorship Care Plan program
- ◆ First to develop a cancer risk assessment tool encompassing all cancers

In the past few years, technology has continued to expand and the OncoLink team have worked hard to keep up! OncoLink has social media pages ([Facebook](#), [Twitter](#) and [Google+](#)) and have added lots of video content (see the [Vimeo page](#)). The [blogs](#) include inspiring survivors and caring oncology nurses and Registered Dieticians. OncoLink host [webinars](#) at least once a month, addressing many topics that are useful to both patients and caregivers. To meet the needs of mobile and tablet users, OncoLink underwent a redesign using responsive design technology.

Half of its users are nurses who are seeking patient education tools and information for themselves. The [treatment binder builder](#) allows care providers to create an educational booklet tailored to the needs of their specific patient. [OncoPilot](#) helps new patients navigate the cancer journey and keep track of appointments, medications and more. The medication teaching sheets are used by nurses all over the world! OncoLink's [survivorship care plan builder](#) has been used to create over 35,000 care plans to date.

As it enters its third decade, the team is committed to continuing to improve the experience of cancer patients and caregivers by empowering them with reliable information. **Happy Birthday OncoLink** - congratulations on this milestone!

Want to get involved? Become a blogger, a reviewer, a writer, a webinar host, a supporter....We need you to continue carrying the OncoLink mission into the next decade and beyond! For more information, email at hampshire@uphs.upenn.edu or cvachani@oncolink.org

RESEARCH UPDATE

In October, the Research Division welcomed **Meena Swaminathan** as the Chief Financial and Administrative Officer for our division. Meena was previously a business/grants manager in the Finance Department of the Wharton School. Before this, she was a grants manager in the Department of Dermatology and a business administrator in the Department of Neuropsychiatry/Psychiatry in the Perelman School of Medicine. We are delighted for the many years of experience in research administration that she brings to our division. Her office is located on the 8th floor of the Smilow Center for Translational Research.

Also new to the division in recent months are **Dr. Mariana Cooke** to the Dorsey lab, **Drs. Vladimir Popov** and **John (Ioannis) Verginadis** to the Koumenis Lab, and **Alan Mitter, Peihong Ma,** and **Menggui Huang** to the Fan Lab. We are happy to have them join us in the 8th floor laboratories of the Smilow Center, and look forward to hearing more about their research findings in future seminars and publications of the Research Division.

In funding news, congratulations to **Dr. Theresa Busch**, together with co-investigators **Drs. John Plastaras, Arjun Yodh** and **Mary Putt** on funding for the R01 grant entitled “Effects of Photodynamic Therapy on Tumor Oxygenation and Blood Flow”. We also received news of excellent scores for two other R01 grants. The first is co-led by **Drs. Amit Maity** and **Alex Lin**, with co-investigators **Drs. Costas Koumenis, Peter Ahn, Steve Hahn, David Mankoff, Daniel Pryma, Rosie Mick**. The PI of the second well-scored grant was **Dr. Jay Dorsey**, with co-investigators **Drs. Gary Kao, Yi Fan** and **Andrew Tsourkas**. We look forward to sharing news of their funding in the upcoming months.

QUALITY UPDATE

Progress with FY14 Quality Goals

Each fiscal year we establish 3 Rad Onc quality goals. In prior years, we have met or exceeded all of our quality goals. Progress on the FY14 objectives is notable.

(1) Feedback and Communication about error specifically focused on 2 questions from the safety culture survey: “We are given feedback about changes put into place based on event reports” and “We are informed about errors that happen in this department”. Feedback conditions have been established, CRSFB, and are being shared during staff meetings.

(2) Medication Reconciliation completed by Attending Physician during Consult, OTV, and Follow-up appointments was a quality goal in FY13. Congratulations to Attending Physicians on exceeding the FY13 goal. In our continued focus to move from good to great, this is again a quality goal for FY14. Attending Physicians achieved *high performance* with this goal in November and December.

(3) Timeliness of CT Sim Instruction Sheets has been meeting the goal for percentage due by Noon day prior to Sim. This year’s focus continues on the percentage due by 8am the day of Simulation. Since July, Attending Physicians achieved Threshold 5 of 6 months, and Target one of 6 months. Efforts and focus continues as we are confident that Target is attainable for the second half of FY14. In addition, beginning January 2014, Network affiliates will begin tracking this metric.

AROUND THE NETWORK

Chester County Hospital

We are pleased to announce the appointment of **Andre A. Konski, MD, MBA, MA, FACR** as the Medical Director of the Department of Radiation Oncology at Chester County Hospital.



Dr. Konski earned his Medical Degree in 1984 from New York Medical College. He earned a Master's in Business Administration, as well as a Master of Arts in Economics from the University of Toledo in 1995 and 1998 respectively. In 1998, he completed his residency in radiation oncology at Strong Memorial Hospital in Rochester, New York.

At Chester County Hospital, Dr. Konski will be responsible for further building upon the clinical services already offered at the hospital, including evaluation, treatment, and follow-up care. The Radiation Oncology program will be expanding the scope of services offered using its TrueBeam linear accelerator, as well as adding a new CT simulator and high dose rate (HDR) brachytherapy in summer 2014.

Pennsylvania Hospital

Pennsylvania Hospital has been selected as one of America's Best Breast Centers by the Women's Choice Award from Women Certified. Our center was selected because it met the criteria, including NAPBC accreditation and ACR BICOE accreditation. Fewer than 300 breast centers are being honored with this award in 2014, making us one of the very best breast centers in the nation.

Doylestown Hospital

Rachel Saks, MSS, LCSW is our new social worker. She's a Doylestown Hospital employee who works for our Penn Rad Onc Doylestown practice 8 hours per week. She joined us last fall and since has made a huge difference for our patients and even staff. She completes assessments on every patient and screens them for distress, offering helpful information and resources, as well as support. This year she even helped acquire a car through a non-profit agency for a family that truly needed it. We are thrilled to have Rachel as a team member at Doylestown!



Phoenixville

Penn RadOnc at Phoenixville hosted an open house to showcase the new Varian TrueBeam on October 23rd.

Valley Forge

Happy 1st Anniversary! Although the celebration was canceled due to inclement weather, we marked the one year anniversary of the opening of Penn Radiation Oncology at Valley Forge.

Penn Medicine
800.785.PENN PennMedicine.org

Radiation Oncology Locations

Patients can be assessed for gaiter binding, CyberKnife® and Gamma Knife® at the Penn Radiation Oncology community practices.

Community Location	Address	Phone
Radcliffe Oncology Valley Forge*	100 Chestnut & Broad Valley Forge, PA 19112	610.486.5700
Radcliffe Oncology Chester Hill*	800 Lancaster Avenue Chester Hill, PA 19119	215.442.1100
Radcliffe Oncology Doylestown*	500 North State Street Doylestown, PA 19801	267.880.2710
Radcliffe Oncology Haverhill Township	1000 Health System - South Campus Radcliffe Cancer Center, Suite 150 200 Market Center Drive Sewell, NJ 08080	609.860.3000
Radcliffe Oncology Phoenixville	1200 Chester County Hospital Phoenixville, PA 19380	610.882.1870
Radcliffe Oncology West Chester	700 Chester County Hospital 701 East Marshall Street West Chester, PA 19380	610.471.5020

*A facility of The Hospital of the University of Pennsylvania

For more information about the Penn Radiation Oncology Network, please contact:

Rose Mueller, Network Operations Director-215-776-4031
Dr. Bill Rate, Clinical Director, Network 267-880-2710
Karen Zatzariny, Network Practice Manager 267-234-4452

SOCIAL SCOOP

Holiday Fun

The bad weather couldn't keep us from enjoying the holiday season! Employees celebrated with the Charity Basket Raffle and the Annual Department Holiday Party!



Phoenixville Color Run

As one of the event organizers, Mary Thomas, along with Dr. Et-tsu Chen and Beth Leszkowicz, lead therapist at VF, participated in the Phoenixville Color Run charity event. Last year the event had a little over 100 participants, but this year, an amazing 1100 runners participated!!



Dress on a Dime

As a major sponsor of the Dress on a Dime event, Penn RadOnc put together a coveted basket for the auction called Black and White Approved and Dr. Et-tsu Chen was the MC for the 5th year.



RECOGNITION ROUND-UP

Employee Rewards & Recognition Peer Recognition

Excellence is exhibited in the Department of Radiation Oncology each and every day! With our dedicated and hard-working staff, we continue to make patient care our number one priority. Join us in congratulating the following employee's who were nominated by their colleagues for their contributions to the department.

Diana Alcavage

Mike Bieda

Amber Clemmer

Nikki Davis

Kelly Farrady

Elizabeth Garver

Erin Hendrickson

Genevieve Hollis

Paul James

Roberto Lorenzo

Sarah Lowitz

Kim Nocito

Dana Patsch

Kevin Teo

Patricia Velez

EDUCATION CONNECTION

Clinical Trials Course

On October 4th, our department held the **2nd Annual Course on Clinical Trials in Radiation Oncology**, where we welcomed over 100 residents and junior faculty from primarily the northeast. Faculty were from seven institutions (Harvard, Memorial Sloan-Kettering, Johns Hopkins, University of Maryland, Radiation Therapy Oncology Group (RTOG), Jefferson, and Yale University), in addition to **John P. Plastaras, MD, PhD** from Penn Radiation Oncology and **Corey Langer, MD**, from Medical Oncology at Penn. Highlights included a "Meet-the-Professor" lunch and a happy hour for participants and faculty, in addition to a day of lectures. **Neha Vapiwala, MD** and **Abigail T. Berman, MD** served as course co-directors.



Proton Therapy Clinical Education Program

We are pleased to announce that Penn Medicine's Department of Radiation Oncology, Roberts Proton Therapy Center, OncoLink and IBA ([Ion Beam Applications SA](#)) have launched the first comprehensive Proton Therapy Clinical Education program. The Proton Therapy Clinical Education Program is made up of a wide array of educational modules, ranging from an introduction to proton therapy to very specific clinical topics

such as the treatment of non-small cell lung cancer or head and neck cancers with pencil beam scanning. By participating in this program, proton therapy centers can train their staff members to safely and effectively start proton therapy treatment in their facilities. It will also help to accelerate the ramp-up of patient treatment and increase the variety of cases treated. These comprehensive training modules are constructed by members of Penn Medicine's Department of Radiation Oncology and Roberts Proton Therapy Center.

Resident Awards

Brian Baumann

Abstract selected for presentation at the Best of ASTRO conference, 2013
Elected to Sigma Xi Scientific Research Society

Annemarie Fernandes

ASTRO Annual Meeting Travel Award, 2013

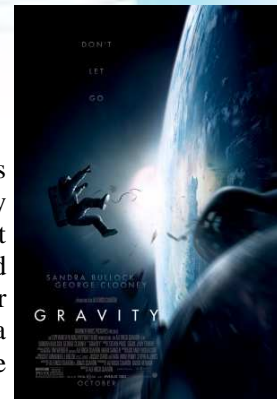
Xuanfeng Ding

2012 Award of Excellence for the best Medical Imaging Article, Journal of Applied Clinical Medical Physics

MOVIE REVIEW: GRAVITY

by **Eli Glatstein, M.D.**

This is movie that you really have to see on a wide screen in 3D. The technical expertise that went into this movie are astonishing and the imagery unbelievable. The movie starts with a shuttle Explorer gradually orbiting into sight. There are three astronauts outside the ship; one of them is a rookie astronaut on her first trip to space, played by Sandra Bullock, who is basically a scientist with minimal training. The second astronaut is a veteran astronaut played by George Clooney. Clooney has a secondary role here, but his star magnetism comes through even though it is primarily his voice that you identify with as he is covered up by a cocoon of a space suit. There is a third astronaut who initially is flipping around doing tricks in space shouting WEEEE!



The amazing thing about this movie is that it is taking place in space. The earth is in the background and the absence of gravity makes everything seem abnormal, but peaceful and serene. The movie capitalizes enormously on technology and the silence of space, which is in its own way another character.

Very few words are spoken from Houston. The Russians have demolished an old satellite and it is sending debris flying through the belt in which the shuttle is orbiting. I'm not entirely clear as to why the debris is so violent, but it strikes the spacecraft with tremendous force sending Clooney and Bullock hurtling in space, spinning and somersaulting. Bullock's character is adrift and tumbling over, she is weightless and is cut off from communications with Houston and she is breathing too fast and using up her oxygen. It is sort of like a horror film, but the horror in this film is the nothingness of space.

Bullock's character floating in space is a kind of a metaphor for her life that has been in a permanent suspension. This is Bullock's picture and she gives a tremendous performance. The rest of the movie is basically how to get her back to earth and her passion for survival. As I said before, you want to see this one on a big screen and preferably in 3D. By the time it is over, you will be as exhausted as Sandra Bullock!

DELICIOUS DISH: A Memorable Meatball at Little Nonna's

by **Rebecca Wilson**

Little Nonna's is an Italian restaurant from the brilliant culinary minds of Marcie Turney and Valerie Safran. I have been a huge fan of Turney and Safran's restaurants that have turned 13th Street into a mecca of delectable food choices (e.g.; Barbuzzo, Jamonera and Lolita). We expected a homey restaurant complete with an Italian mother's cooking and that was exactly what we got. We started with the Grilled Little Gem Caesar and Garlic Bread. Both were done well and we enjoyed the crispy pieces of polenta in the Caesar. For our entrees we ordered the Spaghetti and Meatballs and Lemon Chicken "Al Mantone". The meatballs were large and surprisingly filled with fontina cheese. We have had our share of meatballs and these were exceptional. They were not heavy or dry and the cheese added flavor and complexity. The Lemon Chicken was also cooked to perfection. My favorite aspect of this dish was the crispy fingerlings. I couldn't stop eating them! They were perfectly seasoned and crispy.

The success of Little Nonna's is in the details. Everything about the restaurant makes you feel like you are in an Italian mother's kitchen. The restaurant is small, which adds to the ambiance. From the outside, it looks quaint with a striped awning and lace curtains. Inside it is welcoming with warm colors and decorative tchotchkes that remind you of your grandmother's home. Because of its small size, I would recommend reservations. Patrons walked in without reservations and were told they could sit at the bar - not the best option. Unfortunately, we couldn't fit dessert, but what we saw looked good. From start to finish, there were smiles all around and for a reasonable price. I will definitely return for some homey Italian cooking and some memorable meatballs.

DEPARTMENT PUBLICATIONS

Radiation Injury to the Normal Brain Measured by 3D-Echo-Planar Spectroscopic Imaging and Diffusion Tensor Imaging: Initial Experience

Chawla S, Wang S, Kim S, Sheriff S, Lee P, Rengan R, Lin A, Melhem E, Maudsley A, Poptani H.
J Neuroimaging Nov 2013 (Epub ahead of print).

Stage Migration in Planning PET/CT Scans in Patients Due to Receive Radiotherapy for Non-Small-Cell Lung Cancer

Geiger GA, Kim MB, Xanthopoulos EP, Pryma DA, Grover S, Plastaras JP, Langer CJ, Simone CB 2nd, Rengan R.
Clin Lung Cancer. 2014;15(1):79-85.

mRNA Expression Profiles for Prostate Cancer following Fractionated Irradiation Are Influenced by p53 Status

Simone CB 2nd, John-Aryankalayil M, Palayoor ST, Makinde AY, Cerna D, Falduto MT, Magnuson SR, Coleman CN.
Transl Oncol. 2013;6(5):573-85.

What's in a Label? Radioimmunotherapy for Metastatic Prostate Cancer

Simone CB 2nd, Hahn SM.
Clin Cancer Res. 2013;19(18):4908-10.

Palliative care for patients with locally advanced and metastatic non-small cell lung cancer

Simone CB 2nd, Jones JA.
Ann Palliat Med. 2013;2(4):178-88.

Experimental characterization of two-dimensional spot profiles for two proton pencil beam scanning nozzles

Lin L, Ainsley CG, Solberg TD, McDonough JE.
Phys Med Biol, 59:493-504, 2014.

Non-human primate model of human radiation-induced venoocclusive liver disease and hepatocyte injury

Yannam GR, Han B, Setoyama K, Yamamoto T, Ito R, Brooks JM, Guzman-Lepe J, Galambos C, Fong JV, Deutsch M, Quader MA, Yamanouchi K, Kabarriti R, Mehta K, Soto-Gutierrez A, Roy-Chowdhury J, Locker J, Abe M, Enke CA, Baranowska-Kortylewicz J, Solberg TD, Guha C, Fox IJ.
Int J Radiation Oncol Biol Phys, [Epub ahead of print], 2013.

Localization accuracy and immobilization effectiveness of the stereotactic body frame for a variety of disease sites

Foster R, Meyer J, Iyengar P, Pistenmaa D, Timmerman R, Choy H, Solberg TD.
Int J Radiation Oncol Biol Phys, 87:911-916, 2013.

Multi-staged robotic stereotactic radiosurgery for large cerebral arteriovenous malformations

Ding C, Solberg TD, Hrycushko B, Medin P, Whitworth L, Timmerman RD.
Radiother Oncol, 109:452-456, 2013.

DEPARTMENT PUBLICATIONS (continued)

Predicting tumor radiation response using noninvasive BOLD and TOLD MRI

Hallac RR, Zhou H, Pidikiti R, Song K, Stojadinovic S, Zhao D, Solberg TD, Peschke P, Mason RP.
Magnetic Resonance in Medicine, [Epub ahead of print], 2013.

Optimization of normalized prescription isodose selection for stereotactic body radiation therapy: conventional vs. robotic linac

Ding C, Solberg TD, Hrycushko B, Xing L, Heinzerling J, Timmerman RD.
Med Phys, 40(3):051705-1 - 031719-10, 2013.

Comprehensive Commissioning of the Varian TrueBeam Linear Accelerator: A Multi-institutional study

Glide-Hurst C, Bellon M, Foster R, Altunbas C, Speiser M, Altman M, Westerly D, Miften M, Chetty I, Solberg TD.
Med Phys, 40(3):031719-1 - 031719-15, 2013.

Depletion of regulatory T cells does not influence the inflammation caused by high dose hemi-body irradiation

Ma S, Richardson JA, Bitmansour A, Solberg TD, Pidikiti R, Song K, Vitetta E, Meyer JM.
Plos One, 8(2):1-11, 2013.

Spinal cord tolerance to single-fraction uniform irradiation in swine: implications for a dose-volume effect

Medin PM, Foster RD, van der Kogel AJ, Sayre JW, McBride WH, Solberg TD.
Radiation Oncol 106:101-105, 2013.

Development of a Locally Advanced Orthotopic Prostate Tumor Model in Rats for Assessment of Combined Modality Therapy

Tumati V, Mathur S, Song K, Hsieh J-T, Zhao D, Takahashi M, Dobin T, Gandee L, Solberg TD, Habib AA, Saha D.
International Journal of Oncology, 42:1613-1619, 2013.

2D-3D registration for brain radiation therapy using a 3D CBCT and a single limited field-of-view 2D kV radiograph

Reshma Munbodh, Douglas J Moseley
Proceedings of the 17th International Conference on the Use of Computers in Radiation Therapy (ICCR 2013). In press.

Quantifying cell migration as a contributing factor to the development of rectal toxicity after prostate radiotherapy

Reshma Munbodh, Andrew Jackson,
Medical Physics. In press.

Impact of internet-based cancer survivorship care plans on health care and lifestyle behaviors

Hill-Kayser CE, Vachani CC, Hampshire MK, Di Lullo G, Jacobs LA, Metz JM.
Cancer. 2013 Nov 1;119(21):3854-60. doi: 10.1002/cncr.28286. Epub 2013 Aug 6.

DEPARTMENT PUBLICATIONS (continued)

Implementation of an improved dose-per-MU model for double scattered proton beams to address inter-beamline modulation width variability

Liyong Lin, Jijian Shen, Christopher G Ainsley, Timothy D Solberg, James E McDonough
Accepted by Journal of Applied Clinical Medical Physics, 2014

Charged Particle Radiotherapy

William P. Levin, M.D. and Thomas F. DeLaney, M.D.
Book chapter, 4th edition of Gunderson & Tepper: *Clinical Radiation Oncology*-In Press.

Physiologically guided approach to characterizing respiratory motion

B. White, T. Zhao, J. Lamb, J. Bradley, D. Low.
Med. Phys. 40(12) (2013)

Modeling and incorporating cardiac-induced lung tissue motion in a breathing motion model

B. White, A. Santhanam, D. Thomas, Y. Min, J. Lamb, S. Jani, S. Srinivasan, D. Ennis, D. Low.
Med. Phys. 41(3)(2013)

Comparison between existing and proposed 4DCT protocols

D. Low, D. Thomas, J. Lamb, P. Lee, S. Gaudio, S. Jani, T. Dou, B. White, X. Wu.
Oral Presentation, ESTRO Annual Meeting 2014

A novel fast-helical 4DCT acquisition technique to generate low noise artifact-free images at user selected breathing phases

D. Thomas, J. Lamb, B. White, S. Jani, S. Gaudio, P. Lee, D. Ruan, M. McNitt-Gray, D. Low.
Int. J. Radiat. Oncol. Biol. Phys. (accepted 1/13/14)

Overlooked Lymph Nodes in Rib Cage Have Prognostic Power for Mesothelioma Patients

Melissa Culligan, Mary Putt, Stephen M. Hahn, Evan Alley, Charles Simone, Daniel Sterman, and Keith A. Cengel.
Oral Presentation, International Association for the Study of Lung Cancer's 15th World Conference on Lung Cancer

Practical considerations in the calibration of CT scanners for proton therapy

C Ainsley, C Yeager
J. Appl. Clin. Med. Phys. in press, 2014.

Integrating Nurse Practitioners Into Radiation Oncology: One Institution's Experience

G. Hollis, E. McMenamin
J Adv Pract Oncol 2014;5:42-46

Optimizing bladder cancer locoregional failure risk stratification after radical cystectomy using SWOG 8710

John Christodouleas, Brian Baumann, Jiwei He, Wei-Ting Hwang, Kai Tucker, Justin Bekelman, Cathy Tangen, Seth Lerner, Thomas Guzzo, S. Bruce Malkowicz
Cancer, 2014.

DEPARTMENT PUBLICATIONS (continued)

Occult Pelvic Lymph Node Involvement in Bladder Cancer: Implications for Definitive Radiation

Benjamin Goldsmith, Brian Baumann, Jiwei He, Kai Tucker, Justin Bekelman, Curtiland Deville, Neha Vapiwala, David Vaughn, Stephen M. Keefe, Thomas Guzzo, S. Bruce Malkowicz, John Christodouleas
IJROBP, 2014.

Patient Reported Outcomes After Prostate Cancer Treatment

Surbhi Grover, MD, MPH, James M. Metz, MD, Carolyn Vachani, MSN, RN, AOCN, Margaret K. Hampshire RN, BSN, OCN, Gloria A. DiLullo, MSN, CRNP, Christine Hill-Kayser, MD.
Accepted for publication in Journal of Clinical Urology

Patterns Of Intracranial Control After Stereotactic Radiosurgery To The Resection Cavity

Ojerholm E, Thawani J, Miller D, Alonso-Basanta M, Lee JYK.
17th International Leksell Gamma Knife Society Meeting. NYC, NY. May 2014. Notes: accepted abstract, flash oral presentation.

Gamma knife radiosurgery to 4 or more brain metastases in patients without prior intracranial radiation or surgery

Ojerholm E, Lee JYK, Kolker J, Lustig R, Dorsey J, Alonso-Basanta M.
Cancer Medicine. Forthcoming 2014.

Clinical utility of integrated positron emission tomography/computed tomography imaging in the clinical management and radiation treatment planning of locally advanced rectal cancer

Jonathan T. Whaley, Annemarie T. Fernandes, Robert Sackmann, John P. Plastaras, Boon-Keng Teo, Surbhi Grover, Rodolfo F. Perini, James M. Metz, Daniel A. Pryma, Smith Apisarnthanarax
PRO (currently in press)

Radiotherapy and the tumor microenvironment: mutual influence and clinical implications

Thompson RF, Maity A.
Adv Exp Med Biol. 2014;772:147-65. doi: 10.1007/978-1-4614-5915-6_7. PMID: 24272358

Prospective Trial of Proton Re-irradiation of Recurrent Pelvic Tumors: Dosimetric Analysis

Berman AT, Both S, Sharkoski T, Metz JM, Apisarnthanarax S, Tochner Z, Plastaras, JP.
In press at International Journal of Proton Therapy.

A Comprehensive Dosimetric Study of Pancreatic Cancer Treatment Using Three Dimensional (3D) Conformal Radiation Therapy, Intensity-Modulated Radiation Therapy (IMRT), Volumetric Modulated Radiation Therapy (VMAT), Passive Scattering and Modulated Scanning Proton Therapy (PT)

Xuanfeng Ding, Francesco Dionisi, Shikui Tang, Evangelos Prionas, Chun-Yu Hung, Steven McQuiggan, Ian Butterwick, Haibo Lin, Huifang Zhai, Lingshu Yin, Ali Kassaei, Stephen Avery
Medical Dosimetry (in press)

Is There a Need for Resident Training in Clinical Trial Design?

Berman AT, Shea J, Baffic C, Vapiwala N.
In press at Int J Radiat Oncol Biol Phys.

DEPARTMENT PUBLICATIONS (continued)

Assessing Interpersonal and Communication Skills in Radiation Oncology Residents: a Pilot Standardized Patient Program

Ju M, Berman AT, Hwang WT, LaMarra D, Baffic C, Suneja G, Vapiwala N.
In press at Int J Radiat Oncol Biol Phys.

Absolute calibration of optical power for PDT: Report of AAPM TG140

Zhu TC, Bonnerup C, Colussi VC, Dowell ML, Finlay JC, Lilge L, Slowey TW, Sibata C.
Med Phys. 2013 Aug;40(8):081501.

Triple negative breast cancer initiating cell subsets differ in functional and molecular characteristics and in γ -secretase inhibitor drug responses

Azzam DJ, Zhao D, Sun J, Minn AJ, Ranganathan P, Drews-Elger K, Han X, Picon-Ruiz M, Gilbert CA, Wander SA, Capobianco AJ, El-Ashry D, Slingerland JM.
EMBO Mol Med. 2013 Oct;5 (10):1502-22

Mitigating effects of L-selenomethionine on low-dose iron ion radiation-induced changes in gene expression associated with cellular stress

Nuth M, Kennedy AR.
Oncol Lett. 2013 Jul;6(1):35-42.

Leukocyte activity is altered in a ground based murine model of microgravity and proton radiation exposure

Sanzari JK, Romero-Weaver AL, James G, Krigsfeld G, Lin L, Diffenderfer ES, Kennedy AR.
PLoS One. 2013 Aug 14;8(8):e71757.

Effects of solar particle event proton radiation on parameters related to ferret emesis

Sanzari JK, Wan XS, Krigsfeld GS, King GL, Miller A, Mick R, Gridley DS, Wroe AJ, Rightnar S, Dolney D, Kennedy AR.
Radiat Res. 2013 Aug;180(2):166-76.

Is Disseminated Intravascular Coagulation the Major Cause of Mortality from Radiation at Relatively Low Whole Body Doses?

Krigsfeld GS, Kennedy AR.
Radiat Res. 2013 Sep;180(3):231-4

Relative biological effectiveness of simulated solar particle event proton radiation to induce acute hematological change in the porcine model

Sanzari JK, Wan SX, Diffenderfer ES, Cengel KA, Kennedy AR.
J Radiat Res. 2013 Sep 11.

The Myc-miR-17-92 axis amplifies B-cell receptor signaling via inhibition of ITIM proteins: a novel lymphomagenic feed-forward loop

Psathas JN, Doonan PJ, Raman P, Freedman BD, Minn AJ, Thomas-Tikhonenko A.
Blood. 2013 Dec 19;122(26):4220-9

DEPARTMENT PUBLICATIONS (continued)

A phase I study of nelfinavir concurrent with temozolomide and radiotherapy in patients with glioblastoma multiforme

Alonso-Basanta M, Fang P, Maity A, Hahn SM, Lustig RA, Dorsey JF.
J Neurooncol. 2014 Jan;116(2):365-72.

Monte Carlo modeling in CT-based geometries: dosimetry for biological modeling experiments with particle beam radiation

Diffenderfer ES, Dolney D, Schaettler M, Sanzari JK, McDonough J, Cengel KA.
J Radiat Res. 2013 Dec 5.

Gold-Loaded Polymeric Micelles for Computed Tomography-Guided Radiation Therapy Treatment and Radiosensitization

Al Zaki A, Joh D, Cheng Z, De Barros AL, Kao G, Dorsey J, Tsourkas A.
ACS Nano. 2014 Jan 7.

miR-218 opposes a critical RTK-HIF pathway in mesenchymal glioblastoma

Mathew LK, Skuli N, Mucaj V, Lee SS, Zinn PO, Sathyan P, Imtiyaz HZ, Zhang Z, Davuluri RV, Rao S, Venneti S, Lal P, Lathia JD, Rich JN, Keith B, Minn AJ, Simon MC.
Proc Natl Acad Sci U S A. 2014 Jan 7;111(1):291-6.